

Server Update

For eRAD RIS
Version 2.0
Build 2.2016.4
Update 2.2016.4.3

Table of Contents

Resolved Items.....	3
Code Stream.....	4
Package Contents	5
Intended Audience	5
Who is affected	5
eRAD RIS Release Version Numbers	6
Installing	7
Client/GUI.....	7
Web Service	7
Database Updates.....	11
Patient Portal.....	12

Resolved Items

eRAD RIS

Redmine #	Subject
15583	Insurance Eligibility - Pin is now only passed to Eligible when appropriate.
15537	An issue that could prevent a worklist from refreshing under certain conditions was resolved.
14744	Exams scheduled in the Patient Portal using Guest mode now remain visible in the portal after being merged with internal patient ID.

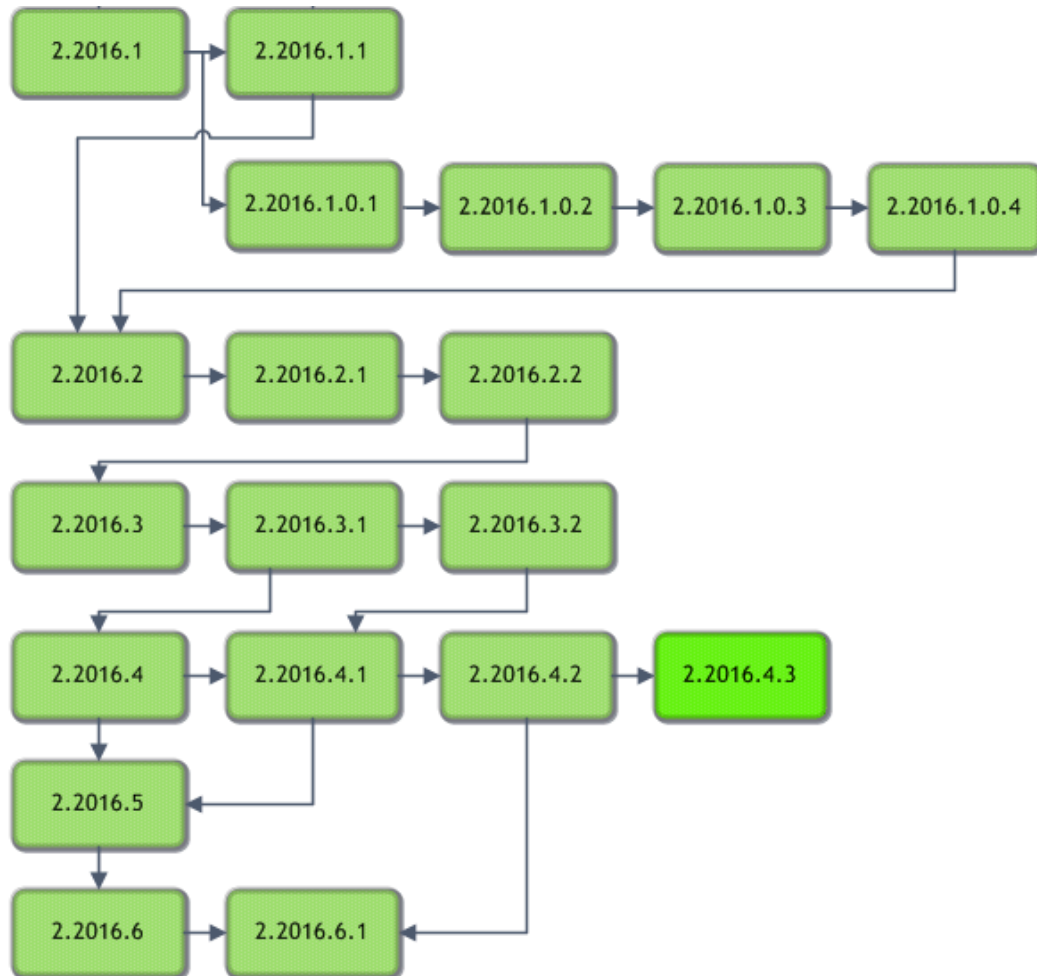
The following are bugs identified and fixed in a newer version and the changes were brought back and fixed in 2016.4.3.

Redmine #	Subject	Original resolved version
15602	Inconsistencies with displaying referring alerts when scheduling appointments with multiple orders have been resolved.	2016.6
15542	Setting the referring physician alert checkbox will no longer prompt that "Another user may have made conflicting changes" when making future updates to the referring physician's account.	2016.5
15541	The referring physician alert is displaying properly when the registration window is opened.	2016.6

Patient Connect

Redmine #	Subject
15623	A small verbiage change was made for the Prescription step (capitalization).
15622	A verbiage change was made for the "Select your provider" step.
15540	Creating a Patient Portal account is possible without timing out when using verification code.
15535	Some messaging changes were made for the Create Appointment workflow.

Code Stream









Legend:

Light Green = Previously Released software

Bright Green = Current Release

Package Contents

 _ReleaseNotes	03/26/2012 11:02 AM
 DB	12/06/2016 3:52 PM
 PatientConnect	12/06/2016 3:52 PM
 rRISService	12/06/2016 3:52 PM
 Service Tools	12/06/2016 3:52 PM
 ThickClient	12/06/2016 3:53 PM

Intended Audience

The intended audience for this document is the RadNet Clinical Systems team and the eRAD Support/Service team.

Who is affected

Build 2016.4 installs. This server update must be applied to 2016.4 → 2016.4.2.

eRAD RIS Release Version Numbers

Build	Patch	UI Version	Core Version	WS Version	DB Version	Digital Forms	Notes
43.1	-	2.43.1.0.25850(3GB)	2.43.0.0.23171	2.43.1.0.25850	2.43.1.0.25771		GUI.zip Web Service and DB Updates
43.2	-	2.43.2.0.26864(3GB)	2.43.0.0.23171	2.43.2.0.26864	2.43.1.0.25771		GUI.zip and Web Service
44	-	2.44.0.0.26570(3GB)	2.44.0.0.26405	2.44.0.0.26570	2.44.0.0.26475		Full Version Release
44.1	-	2.44.0.0.26984(3GB)	2.44.0.0.26405	2.44.0.0.26984	2.44.0.0.26906		Gui.zip, Web Service, and DB
44.1	1	2.44.1.1.27093(3GB)	2.44.0.0.26405	2.44.1.0.26984	2.44.1.0.26906		Gui.zip
44.2	-	2.44.2.0.27410(3GB)	2.44.0.0.26405	2.44.2.0.27410	2.44.2.0.27365		Gui.zip, Web Service, and DB
44.2	1	2.44.2.1.27959(3GB)	2.44.0.0.26405	2.44.2.1.27959	2.44.2.1.27909		Gui.zip, Web Service, and DB
44.2	2	2.44.2.1.27959(3GB)	2.44.0.0.26405	2.44.2.2.28094	2.44.2.1.27909		Web Service
44.3	-	2.44.3.0.28292	2.44.0.0.26405	2.44.3.0.28277	2.44.3.0.28138		Gui.zip, Web Service, and DB
44.3	1	2.44.3.1.28535(3GB)	2.44.0.0.26405	2.44.3.1.28535	2.44.3.0.28138		Gui.zip and Web Service
44.4	-	2.44.4.0.28762(3GB)	2.44.0.0.26405	2.44.4.0.28762	2.44.4.0.28676		Gui.zip, Web Server, DB, SSRS Deployment
44.4	1	2.44.4.1.28953(3GB)	2.44.0.0.26405	2.44.4.1.28953	2.44.4.0.28676		Gui.zip and Web Service
44.4	2	2.44.4.2.29327(3GB)	2.44.0.0.26405	2.44.4.2.29327	2.44.4.0.28676		Gui.zip and Web Service
44.4	3	2.44.4.2.29722(3GB)	2.44.0.0.26405	2.44.4.2.29327	2.44.4.0.28676		Gui.zip and Web Service
44.5	-	2.44.5.0.30022(3GB)	2.44.0.0.26405	2.44.5.0.30022	2.44.5.0.29976		Gui.zip, Web Server, DB
44.5	1	2.44.5.1.30451(3GB)	2.44.0.0.26405	2.44.5.1.30451	2.44.5.1.30449		Gui.zip, Web Server, DB
44.5	2	2.44.5.2.30705(3GB)	2.44.0.0.26405	2.44.5.1.30705	2.44.5.1.30554		Gui.zip, Web Server, DB
45	-	2.45.0.0.29559(3GB)	2.45.0.0.26107	2.45.0.0.29559	2.45.0.0.29558		Full Version Release
45.1	-	2.45.1.0.30774(3GB)	2.45.0.0.26107	2.45.1.0.30774	2.45.1.0.30738		Gui.zip, Web Service, DB, SQLReporting, Questionnaire, Citrix support
45.1	1	2.45.1.1.31175(3GB)	2.45.0.0.26107	2.45.1.1.31175	2.45.1.1.31174		Gui.zip, Web Service, DB, SQLReporting, Questionnaire
45.1	2	2.45.1.1.31175(3GB)	2.45.0.0.26107	2.45.1.2.31378	2.45.1.1.31174		Web Service and Citrix Bridge
45.1	3	2.45.1.3.31452(3GB)	2.45.0.0.26107	2.45.1.3.31452	2.45.1.3.31369		GUI.zip, Web Service, DB, Questionnaire and Citrix Bridge
45.1	4	2.45.1.4.31621(3GB)	2.45.0.0.26107	2.45.1.4.31621	2.45.1.4.31599		GUI.zip, Web Service, DB, Questionnaire and Citrix Bridge
45.1	5	2.45.1.5.31773(3GB)	2.45.0.0.26107	2.45.1.5.31773	2.45.1.5.31771		GUI.zip, Web Service, DB, Questionnaire
45.1	6	2.45.1.6.32070(3GB)	2.45.0.0.26107	2.45.1.6.32070	2.45.1.6.31936		GUI.zip, Web Service, DB, Questionnaire, Citrix Bridge
45.1	7	2.45.1.6.32070(3GB)	2.45.0.0.26107	2.45.1.6.32070	2.45.1.6.31936		Web Service for Wedge only. Version number of Wedge is 45.1.6.32614
45.1	8	2.45.1.8.33254(3GB)	2.45.0.0.26107	2.45.1.6.32070	2.45.1.6.31936		GUI.zip
45.1	9	2.45.1.9.33573(3GB)	2.45.0.0.26107	2.45.1.6.32070	2.45.1.6.31936		GUI.zip
2016.1	-	2.16.1.0.33419 (3GB)	2.16.1.0.33079	2.16.1.0.33419	2.16.1.0.33416		GUI.zip, Web Service, DB, Management Reports, Questionnaire and Citrix Bridge
2016.1	1	2.16.1.1.33672 (3GB)	2.16.1.0.33079	2.16.1.0.33419	2.16.1.0.33416		GUI.zip
2016.1	.0.1	2.16.1.0.1 (3GB)	2.16.1.0.33079	2.16.1.0.33419	2.16.1.0.33416		GUI.zip (This is not included in 2016.1.1, version directly above)
2016.1	.0.2	2.16.1.0.1 (3GB)	2.16.1.0.33079	2.16.1.0.2	2.16.1.0.33416		Wedge Web Services only
2016.1	.0.3	2.16.1.0.3 (3GB)	2.16.1.0.33079	2.16.1.0.3	2.16.1.0.3.00128918		GUI.zip, Web Services and DB
2016.1	.0.4	2.16.1.0.4 (3GB)	2.16.1.0.33079	2.16.1.0.4	2.16.1.0.3.00128918		GUI.zip, Web Services
2016.2	-	2.16.2.0 (3GB)	2.16.2.0	2.16.2.0	2.16.2.0.00172540		Full Version Release - GUI.zip, Web Service, DB, Management Reports, Questionnaire and Citrix Bridge
2016.2	1	2.16.2.1 (3GB)	2.16.2.0	2.16.2.0	2.16.2.0.00172540		GUI.zip and Citrix Bridge
2016.2	2	2.16.2.2 (3GB)	2.16.2.0	2.16.2.0	2.16.2.2.00243102		GUI.zip, DB and Citrix Bridge
2016.3	-	2.16.3.0	2.16.3.0	2.16.3.0	2.16.3.0.00257101	2.16.3.0	Full Version Release
2016.3	1	2.16.3.1	2.16.3.0	2.16.3.1	2.16.3.1.00298834	2.16.3.0	GUI.zip, Web Service and DB
2016.3	2	2.16.3.2	2.16.3.0	2.16.3.2	2.16.3.1.00298834	2.16.3.0	GUI.zip, Web Service
2016.4	-	2.16.4.0	2.16.4.0	2.16.4.0	2.16.4.0.00301943	2.16.4.0	Full Version Release
2016.4	1	2.16.4.1	2.16.4.0	2.16.4.1	2.16.4.0.00301943	2.16.4.0	GUI and Web Service updates
2016.4	2	2.16.4.2 (3GB)	2.16.4.0	2.16.4.1	2.16.4.0.00301943	2.16.4.0	GUI and Patient Portal updated
2016.4	3	2.16.4.3 (3GB)	2.16.4.0	2.16.4.3	2.16.4.3.00483474	2.16.4.0	GUI, Web Services, DB and Patient Portal updated

Installing

Client/GUI

Copy and replace the current rRIS...zip file with the eRAD_rRIS_2016.4.3.zip file provided with this release.

Be sure to make a backup of the ris.exe.config file contained within the current .zip folder.

Web Service

This update is only required for the Wedge Web Services. The Core RIS Service and Document Distribution Service are not required to be updated.

1. The web service upgrade consists of replacing the files in the RIS Web Service directory with the files supplied in the rRISService folder with this build. Always create a backup of the files being replaced. This upgrade includes 107 files in the rRISService folder and 7 sub folders. Of those folders, 1 is a folder titled “XSL” that contains a sub folder and files within the subfolder. Another folder is titled “**deploy**” that contains the new .config files that will be deployed with the user of the file called “ServicesConfigWizard.exe” (see instructions below). Folders are (Arabic), he (Hebrew), pt_BR (Brazilian Portuguese) and es-AR (Argentina Spanish) are localization folders. The WedgePlugins folder contains various plugin files for RADAR, MIRTH, Ensemble, etc...

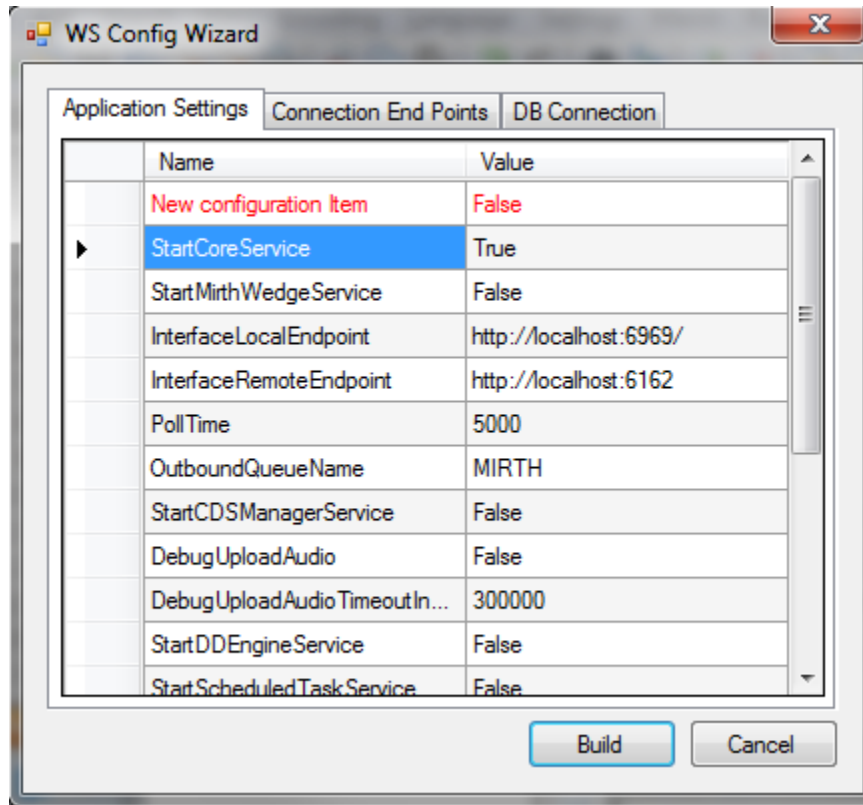
Services Configuration Wizard

With the release of 4.2 to decrease the chance of losing configuration settings and missing new configuration options, we will no longer include the configuration files in the release in the main set of files, but they will now exist in a “deploy” folder, which will contain the three site configurable config files; applicationsettings, connectionstrings, and services as well as a copy of the rRISServices.exe configuration file. The contents of this folder should not be required to be touched.

On the install of a new service, all files will be copied to the appropriate locations on the server (no configurations will be overwritten). If instructed or to confirm no new configurations have been added the user can run the new application “ServicesConfigWizard.exe”

This application will read the existing configuration file(s) (if files exist), and compare to the provided new configuration files then will display three tabs, for each configuration file:

Application Settings: all existing configuration values will be displayed, if there are any new configuration entries they will be displayed in red.

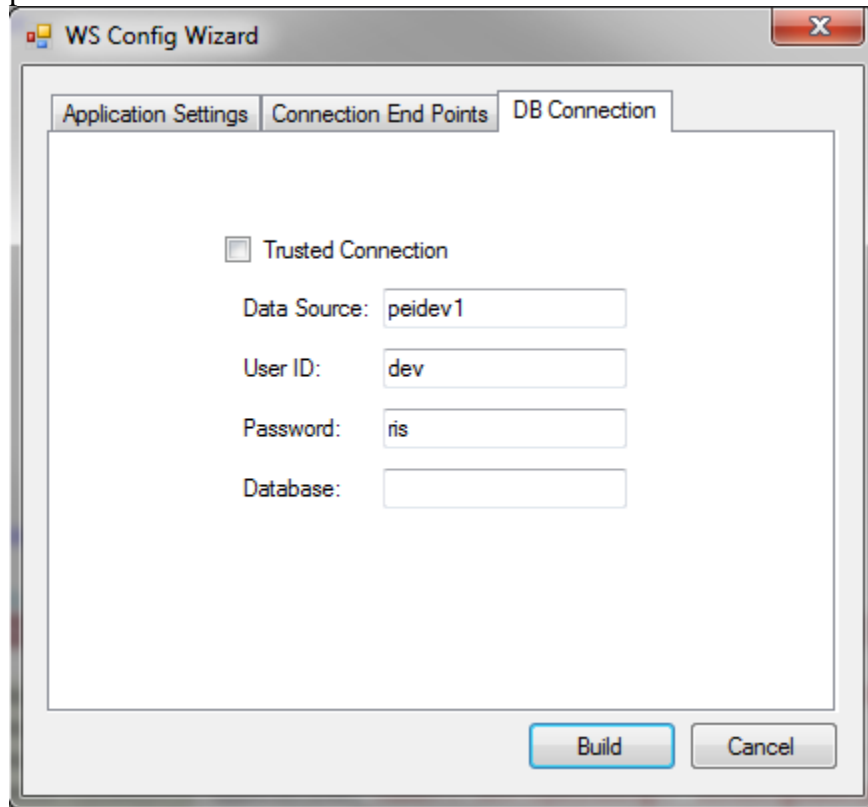


Connection End Points: will display the existing configuration, if the value is left blank then that entry will not be created, in the case of “Study Service” or “CDS Service” if both http and net.tcp were not provided then that endpoint will not be created at all.

The screenshot shows the 'WS Config Wizard' dialog box with the 'Connection End Points' tab selected. The dialog has three tabs: 'Application Settings', 'Connection End Points', and 'DB Connection'. The 'Connection End Points' tab contains three sections: 'Study Service', 'Notify Service', and 'CDS Service'. Each section has two rows of input fields for 'http://' and 'net.tcp://' protocols, followed by a '/rRIS/' label. The 'Study Service' section has 'localhost:8040' and 'localhost:8041'. The 'Notify Service' section has 'localhost:7095'. The 'CDS Service' section has 'localhost:7092' and 'localhost:7093'. At the bottom right, there are 'Build' and 'Cancel' buttons.

Service	Protocol	Host:Port	Path
Study Service	http://	localhost:8040	/rRIS/
	net.tcp://	localhost:8041	/rRIS/
Notify Service	net.tcp://	localhost:7095	/rRIS/
	http://		
CDS Service	http://	localhost:7092	/rRIS/
	net.tcp://	localhost:7093	/rRIS/

DB Connection: will display the existing configuration, if the Connection is to be used as a trusted connection, then the user ID and password will become disabled and will not be used, and will rely on the provided database value, When not using the trusted connection, The Database value is not needed but can be used to force a specific database connection as long as the provided user has access to that database.



It is always good practice to do a compare of the .config files.

- 1) Stop each service listed below. Copy the files from the RIS Service Updates folder to the directory for each rRISService.

rRISService directories include:

- a) *rRISService*
- b) *CDS rRISService*
- c) *Wedge rRISService*
- d) *DDE rRISService*

Restart each service.

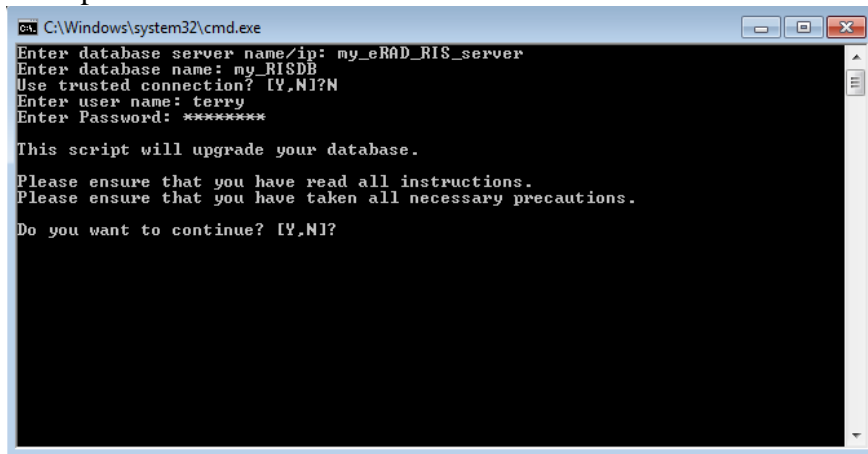
Database Updates

Always run the upgrade scripts in a test environment of the actual database to make sure they run cleanly. If any errors occur please contact development.

Note: There is a new upgrade process introduced with B43.1 called "RunUpgrade.bat". The batch file will open a command window. This process will prompt you for the database server name, database name and authentication credentials. There is no need to run the database upgrade scripts manually as was done in previous releases.

- 1) From the upgrade folder, double click the "RunUpgrade.bat" command file.
- 2) Enter the server name, database name and authentication credentials to the database. You have 2 choices for authentication credentials.
- 3) You can choose to use "Trusted connection". Using this option will pass the identity of the currently logged on user. If this user has "db_owner" access to the eRAD RIS database then feel free to use this options.
- 4) If you decide not to use "Trusted connection" then you will be prompted for user id and password.

Example:



```
C:\Windows\system32\cmd.exe
Enter database server name/ip: my_eRAD_RIS_server
Enter database name: my_RISDB
Use trusted connection? [Y,N]?N
Enter user name: terry
Enter Password: *****

This script will upgrade your database.

Please ensure that you have read all instructions.
Please ensure that you have taken all necessary precautions.

Do you want to continue? [Y,N]?
```

- 5) After the upgrade program has finished you can find the upgrade logs in the "log" folder. The file name will be eRAD_RIS_db_upgrade_timestamp.log, where timestamp is a value representing the date and time the upgrade started. If you see any errors please contact the development team

Patient Portal

The RIS Patient Portal deployment folder contains a sub folder called “PatientPortalAppFolder.” The “PatientPortalAppFolder” contains the complete set of files necessary for the RIS Patient Portal to run.

To deploy the RIS Patient Portal files, run the “DeployPatientPortal.bat.” This batch program is located inside the “PatientPortalAppFolder.” Following is some information about this batch program:

- It needs to be run on the server containing the RIS Patient Portal web site.
- It will present the person running the program (installer) a list of web sites on the current server.
- The installer will have to enter the web site for which they want to deploy the patient portal files.
- The program will present details of what it is about to do and ask the installer to confirm in order to proceed.
- The program will write to a log file in the same folder as the DeployPatientPortal.bat.
- It will replace the bin, content, view and scripts folder in the specified web site path.
- It will also replace the web.config and packages.config files.
- It will add applicationsettings.config, connectionstrings.config and rewriteRules.config if any of those files are not present.
- It will add applicationsettings.config.vx.x.x.x, connectionstrings.config.vx.x.x.x and rewriteRules.config.vx.x.x.x so the installer can review if there are any changes in these files that may need to be implemented in actual .config file.

You can use this batch program to redeploy new releases of the RIS Patient Portal. Please ensure to review the new .config.vx.x.x.x files and release notes to ensure you take advantage of new configuration settings.